



Agilent GC-MSD Troubleshooting and Maintenance

Course Number H2294A

Student Manual

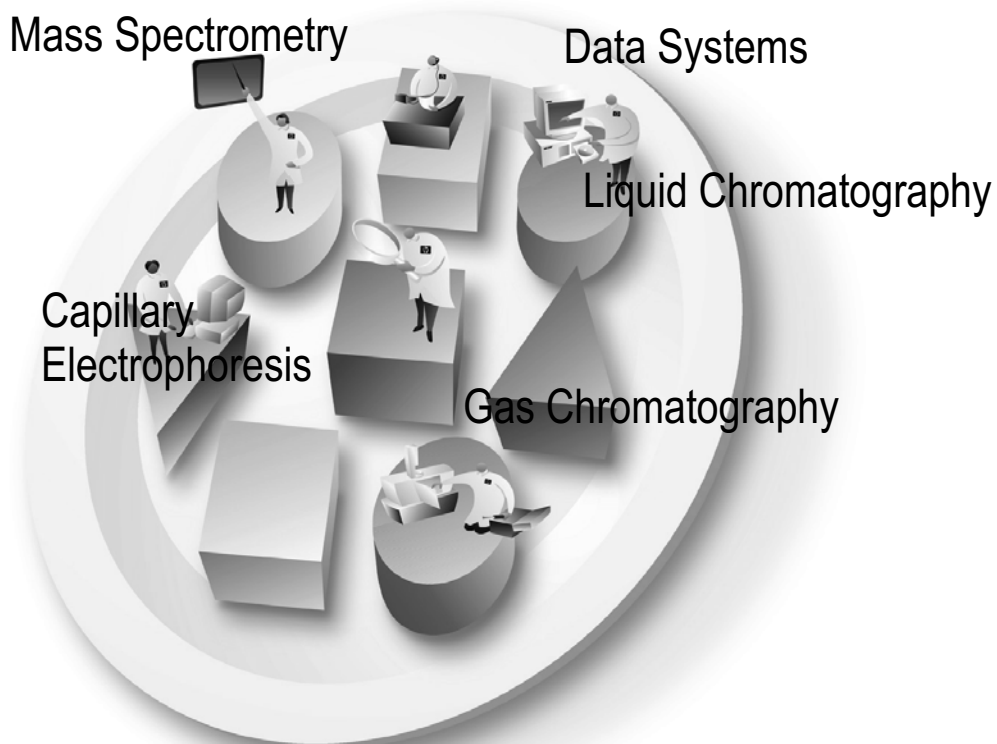


Table Of Contents

AGILENT GC-MSD TROUBLESHOOTING & MAINTENANCE	1
SYSTEM OVERVIEW & LOGICAL TROUBLESHOOTING	2
TYPICAL AGILENT GC-MSD SYSTEM	3
WHAT TYPE OF INFORMATION IS AVAILABLE FROM THE GC-MS SYSTEM?	5
MSD FUNCTIONAL DIAGRAM.....	6
LOGICAL TROUBLESHOOTING.....	8
INFORMATION FUNNEL	9
STEP 1: DEFINING THE PROBLEM	10
STEP 2: CHECKING THE FRONT PANELS	12
STEP 3: CHECKING THE LOG BOOK	13
STEP 4: ISOLATION	14
STEPS 5 THRU 8.....	15
TUNES AND DIAGNOSTICS	17
IN THIS SECTION, YOU WILL LEARN	18
TROUBLESHOOTING THROUGH TUNING.....	19
STANDARD SPECTRA AUTOTUNE.....	20
MANUAL TUNE	23
COMMON CONTAMINANT IONS.....	24
STATUS CHECKS	25
VACUUM STATUS.....	26
VENTING THE SYSTEM.....	27
VENTING THE SYSTEM (CONT.).....	29
PUMPING DOWN THE SYSTEM.....	30
OTHER VACUUM MENU ITEMS	31
LAB EXERCISE: BENCHMARK PERFORMANCE TESTS	33
STANDARD SPECTRA AUTOTUNE	34
MANUAL TUNE	36
STATUS CHECKS	37
ANALYZING THE GC-MSD “CHECK OUT” SAMPLE.....	38
VENTING THE MSD	40
6890 GC CONSIDERATIONS	41
IN THIS SECTION, YOU WILL LEARN	42
GC CONSIDERATIONS	43
COMMON INJECTION PORT PROBLEMS.....	45
COLUMN INSTALLATION (INLET)	46
SPLIT/SPLITLESS INLET MODES	48
EPC INLET: SPLIT MODE.....	49
EPC INLET: SPLITLESS MODE	50
SPLITLESS FLOW DIAGRAM - PREINJECTION	51
SPLITLESS FLOW DIAGRAM - INJECTION	52
SPLITLESS FLOW DIAGRAM – SAMPLE VAPORIZATION.....	53
SPLITLESS FLOW DIAGRAM – SAMPLE TRANSFER TO COLUMN	54
SPLITLESS FLOW DIAGRAM – PURGE VALVE OPEN	55
SPLITLESS FLOW DIAGRAM – GAS SAVER ON	56
SPLITLESS FLOW DIAGRAM – LINER OVERLOAD	57
EPC - PULSED SPLITLESS MODE.....	59

INJECTION PORT CONSIDERATIONS.....	60
CAPILLARY LINERS.....	61
SPLIT/SPLITLESS INLET PREVENTATIVE MAINTENANCE PARTS.....	62
GC PROBLEM 1.....	64
GC PROBLEM 2.....	66
COMMON CAPILLARY DIRECT INTERFACE PROBLEMS.....	68
COLUMN INSTALLATION (INTERFACE).....	70
SEPARATING THE MS FROM THE GC.....	72
HEATER/SENSOR ASSEMBLY.....	73
OTHER INTERFACE PARTS.....	75
PREVENTATIVE MAINTENANCE.....	77
MAINTENANCE LOG BOOK.....	78
LAB EXERCISE: 6890 GC MAINTENANCE.....	79
6890 GC INLET MAINTENANCE.....	80
COLUMN INSTALLATION.....	81
GC-MSD INTERFACE HEATER/SENSOR.....	82
INSTALLING THE COLUMN INTO THE INTERFACE.....	83
PUMPING DOWN THE SYSTEM.....	84
STANDARD SPECTRA AUTOTUNE.....	85
MANUAL TUNE.....	87
STATUS CHECKS.....	88
ANALYZING THE GC-MSD “CHECK OUT” SAMPLE.....	89
VENTING THE MSD.....	91
THE MSD VACUUM SYSTEM.....	93
IN THIS SECTION, YOU WILL LEARN.....	94
VACUUM SYSTEM FUNDAMENTALS.....	95
COMMON FORELINE PUMP PROBLEMS.....	97
FORELINE (ROUGH) PUMP.....	98
FORELINE PUMP MAINTENANCE.....	99
DRY (OIL-LESS) PUMP.....	101
COMMON HIGH VACUUM PUMP PROBLEMS.....	102
DIFFUSION PUMP PRINCIPLES.....	103
TURBO PUMP PRINCIPLES.....	104
POTENTIAL LEAK SITES.....	105
POTENTIAL LEAK SITES (CONT.).....	107
POTENTIAL LEAK SITES (CONT.).....	108
COMMON DIFFUSION PUMP PROBLEMS.....	109
DIFFUSION PUMP FLUID LEVEL.....	110
REMOVING THE DIFFUSION PUMP.....	111
REPLACING THE DIFFUSION PUMP FLUID LEVEL.....	113
REPLACING THE PUMP FAN.....	115
COMMON TURBO PUMP PROBLEMS.....	117
VACUUM MEASUREMENT PROBLEMS.....	119
TYPICAL PRESSURES: TURBO.....	121
TYPICAL PRESSURES: DIFFUSION.....	122
VENTING PROCEDURES.....	123
VACUUM PROBLEM 1.....	124
VACUUM PROBLEM 2.....	126
VACUUM PROBLEM 3.....	127
PREVENTATIVE MAINTENANCE.....	128
MAINTENANCE LOG BOOK.....	129
LAB EXERCISE: MSD VACUUM SYSTEM MAINTENANCE.....	131
DRAIN AND REFILL FORELINE PUMP.....	132

REPLACING THE FORELINE PUMP OIL TRAP.....	133
REMOVING THE DIFFUSION PUMP.....	134
REPLACING THE DIFFUSION PUMP FLUID.....	135
REPLACING THE PUMP FAN.....	136
THE MSD ION SOURCE.....	137
IN THIS SECTION, YOU WILL LEARN.....	138
COMMON ION SOURCE PROBLEMS.....	139
ACCESSING THE ANALYZER.....	141
REMOVING THE ION SOURCE.....	142
ION SOURCE WIRING.....	143
ION SOURCE (CROSS SECTION).....	144
ION SOURCE – FILAMENT REPLACEMENT.....	145
ION SOURCE DISASSEMBLY & PARTS.....	146
ION SOURCE PROBLEM 1.....	147
ION SOURCE PROBLEM 2.....	149
ION SOURCE PROBLEM 3.....	150
ION SOURCE PROBLEM 3 (CONT.).....	151
PREVENTATIVE MAINTENANCE.....	152
MAINTENANCE LOG BOOK.....	153
LAB EXERCISE: MSD ION SOURCE MAINTENANCE.....	155
ACCESSING THE ANALYZER AND REMOVING THE ION SOURCE.....	156
CLEANING THE ION SOURCE.....	157
PUMPING DOWN THE SYSTEM.....	159
STANDARD SPECTRA AUTOTUNE.....	160
MANUAL TUNE.....	162
STATUS CHECKS.....	163
ANALYZING THE GC-MSD “CHECK OUT” SAMPLE.....	164
VENTING THE MSD.....	166
THE MSD QUADRUPOLE MASS FILTER.....	167
IN THIS SECTION, YOU WILL LEARN.....	168
MASS FILTER FUNCTION.....	169
MATHIEU STABILITY DIAGRAM.....	171
COMMON QUADRUPOLE PROBLEMS.....	172
REPLACING THE MASS FILTER HEATER/SENSOR.....	174
“DIPPING THE COILS”.....	175
PREVENTATIVE MAINTENANCE.....	177
MAINTENANCE LOG BOOK.....	178
THE MSD DETECTOR.....	179
IN THIS SECTION, YOU WILL LEARN.....	180
COMMON HED/EM PROBLEMS.....	181
HED/EM FUNCTIONAL DIAGRAM.....	182
X-RAY LENS / ELECTRON MULTIPLIER.....	183
REPLACING THE EM HORN.....	184
DETECTOR PROBLEM.....	186
REPLACING THE PRIMARY FUSES.....	188
REFILLING THE PFTBA CALIBRATION VIAL.....	189
FINAL PROBLEM.....	191
PREVENTATIVE MAINTENANCE.....	192
MAINTENANCE LOG BOOK.....	193
LAB EXERCISE: MSD MASS FILTER AND DETECTOR MAINTENANCE.....	195
REMOVING AND REPLACING THE MASS FILTER HEATER/SENSOR.....	196

REPLACING THE ELECTRON MULTIPLIER HORN.....	197
REPLACING THE PRIMARY FUSE(S).....	198
PUMPING DOWN THE SYSTEM.....	199
STANDARD SPECTRA AUTOTUNE.....	200
MANUAL TUNE.....	203
STATUS CHECKS.....	204
ANALYZING THE GC-MSD “CHECK OUT” SAMPLE.....	205
LAB EXERCISE: MISCELLANEOUS MAINTENANCE	207
DIPPING THE COILS.....	208
REFILLING THE PFTBA VIAL.....	210
LAB EXERCISE: “BUG” LAB (FINAL EXAMINE).....	213
GATHERING INFORMATION.....	214
INFORMATION FUNNEL.....	215